



ABS2020

Moving Airfreight Forward

Java Plugin Installation on Windows Workstations

Airports Bureau Systems Limited
Headline House
Chaucer Road
Ashford
Middlesex
TW15 2QT

Tel: +44 (0)1784 425400

Fax: +44 (0)1784 425414

Copyright © Airports Bureau Systems Limited 2008-9

Table of Contents

1 INTRODUCTION.....	3
2 INSTALLATION STEPS.....	3
3 CONTROL PANEL CONFIGURATION.....	6

1 Introduction

Java Plug-in technology, included as part of the Java Runtime Environment (JRE), Standard Edition (Java SE), establishes a connection between popular browsers and the Java platform. This connection enables applets on Web sites to be run within a browser on the desktop.

The JRE provides the libraries, Java virtual machine, and other components necessary for you to run applets and applications written in the Java programming language.

This document will guide you during the installation of the JRE Installation for Microsoft Windows (32-bit) necessary to run ABS2020 version 4.

Note: Trying to install the Java SE Runtime Environment on a non-supported version of Microsoft Windows or on a machine that doesn't have a sufficiently up-to-date Service Pack will cause the installer to generate this warning: "We recommend that you do not install this Java platform for the following reasons: This Java platform does not support the operating system or operating-system service pack on this machine." ABS will attempt to assist the recommended version of JRE to our customer PCs running at least Windows XP.

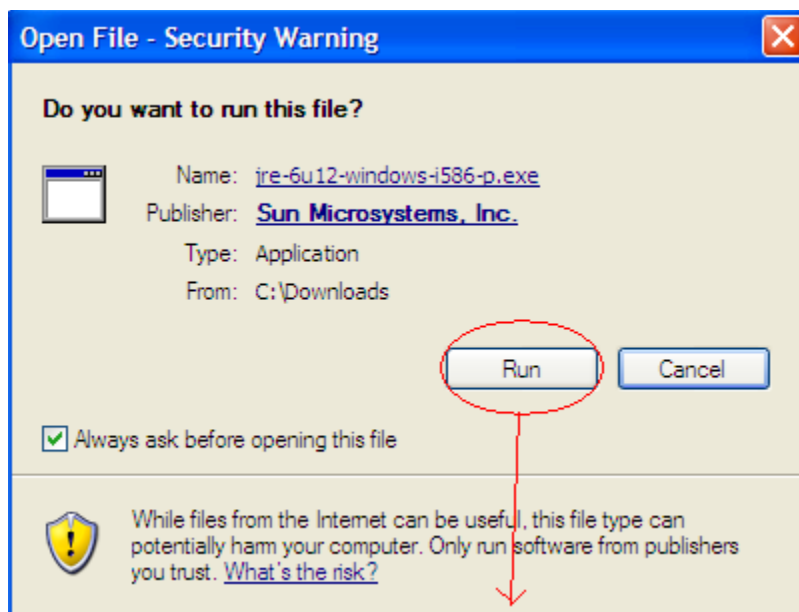
2 Installation Steps

To install and configure the java plugin software you must have administrator rights. Download the JRE 1.6.0_12 executable file `jre-6u12-windows-i586-p.exe` from the URL below.

<http://www.abs2000.co.uk/download/jre-6u12-windows-i586-p.exe>

Once the installation file has been downloaded to your local PC, follow the steps below to install it.

- Double click the executable file 'jre-6u12-windows-i586-p.exe' and the screen 'Open File – Security Warning' will appear on the screen.

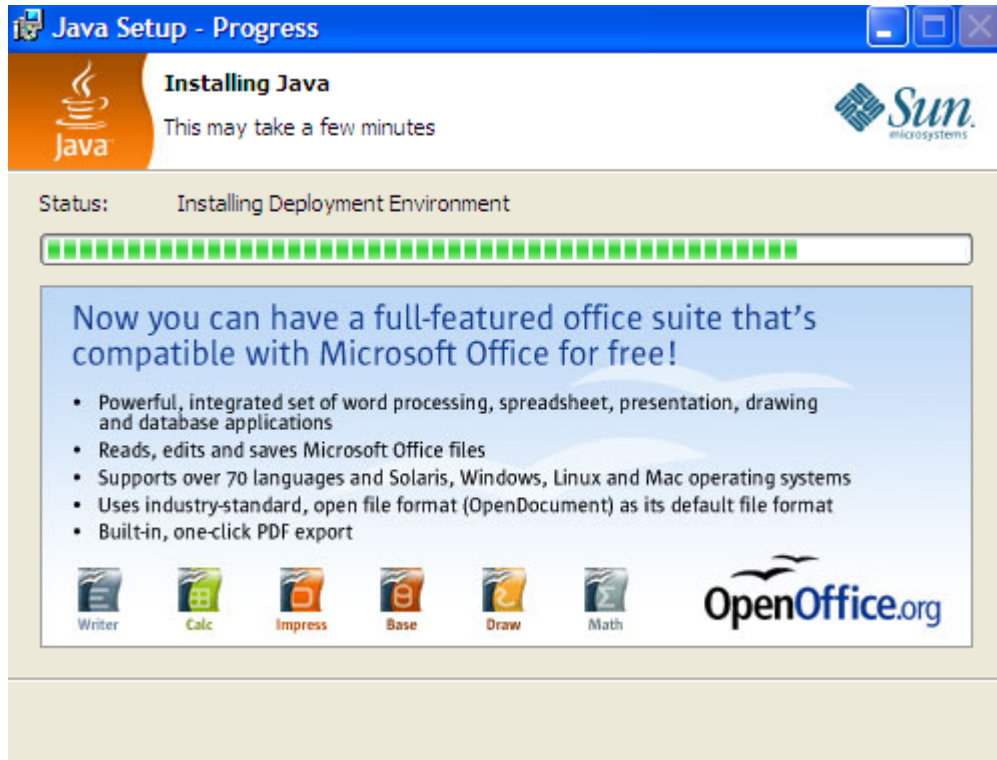


- Click the 'Run' button to continue the installation.

- Welcome to Java™ and JAVAFX™ window will appear next.



- Before clicking the 'Accept' Button please make sure you have closed all your 'Internet Explorer' windows. (Otherwise the installation may fail or may not properly install the plugin)
- Click the 'Accept' button to continue.
- Java Setup – Progress screen will appear next and this screen will show the progress of this JAVA plugin installation.



- Once the installation is completed a 'Java Setup – Complete' window will be displayed as shown below.

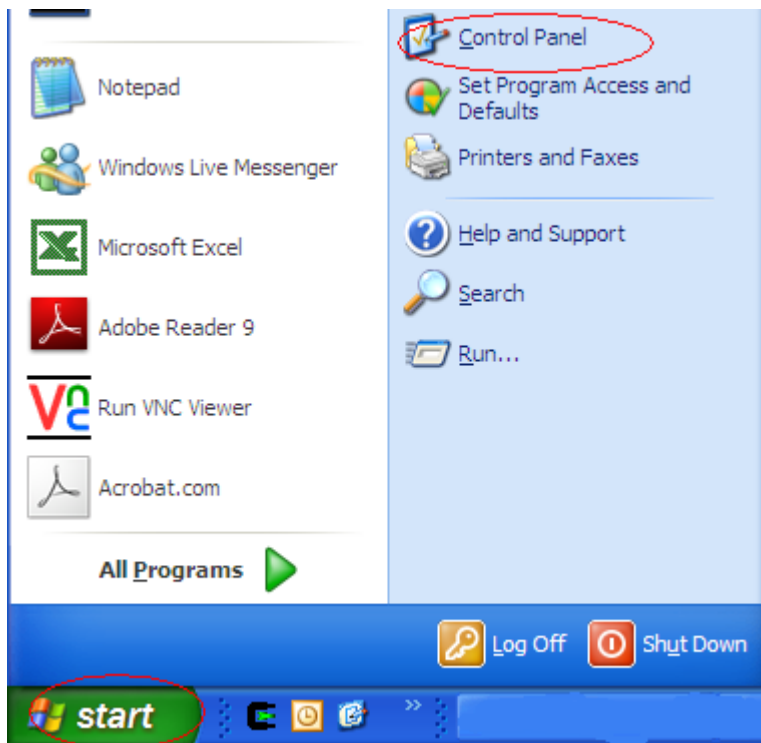


- Click the 'Finish' button to exit the installation window.

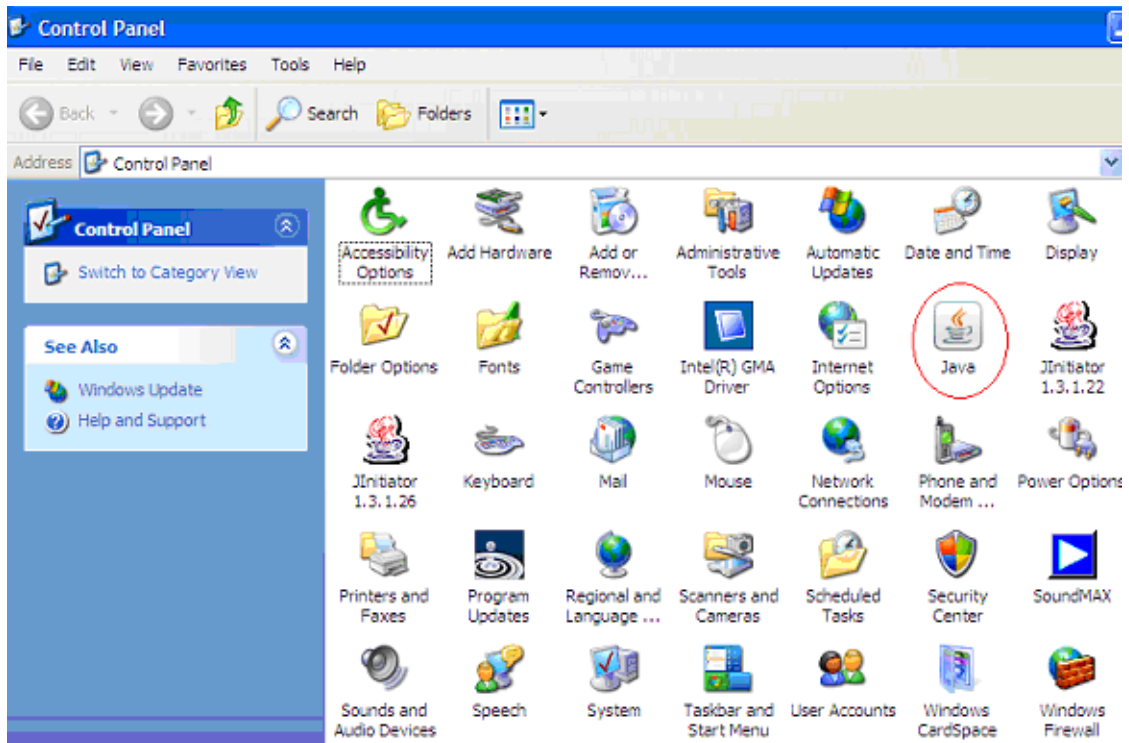
Now you have installed the JAVA plugin successfully on your PC. The next step is to make sure you are using the right version of the JAVA plugin to connect to the ABS2020 v4 application.

3 Control Panel Configuration

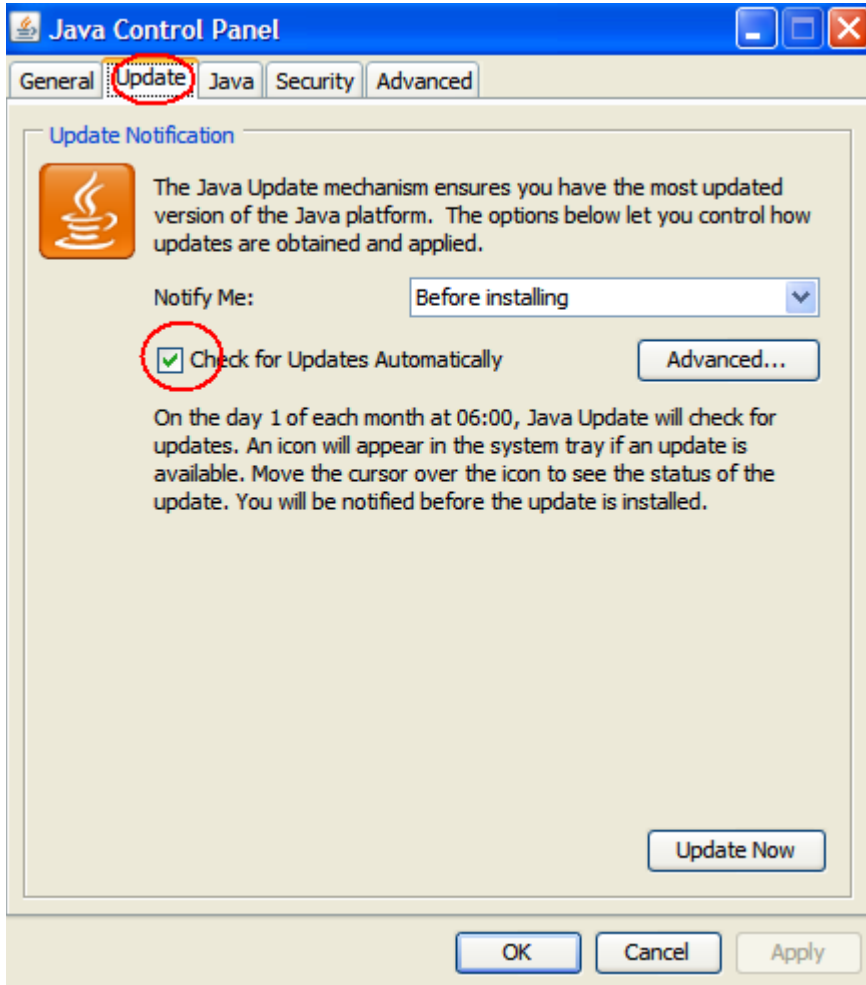
- Click the Start button from your windows below and select the Control Panel Icon.



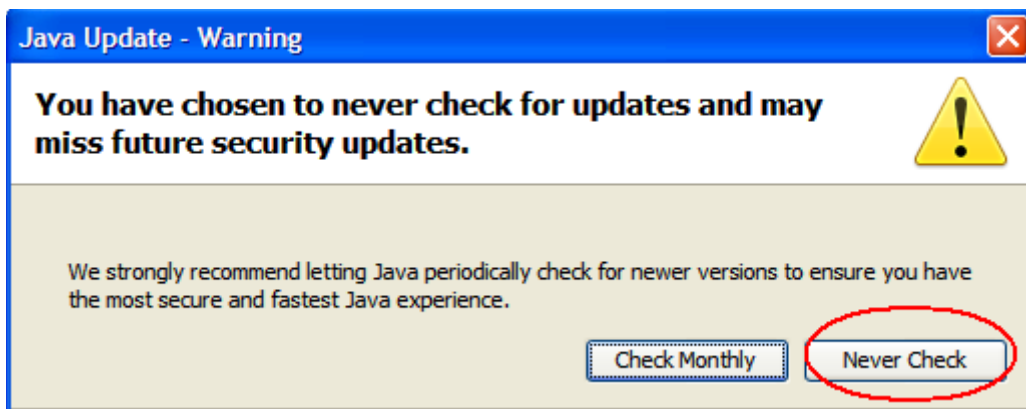
- A new Icon called 'Java' would have been created in the Control Panel window.



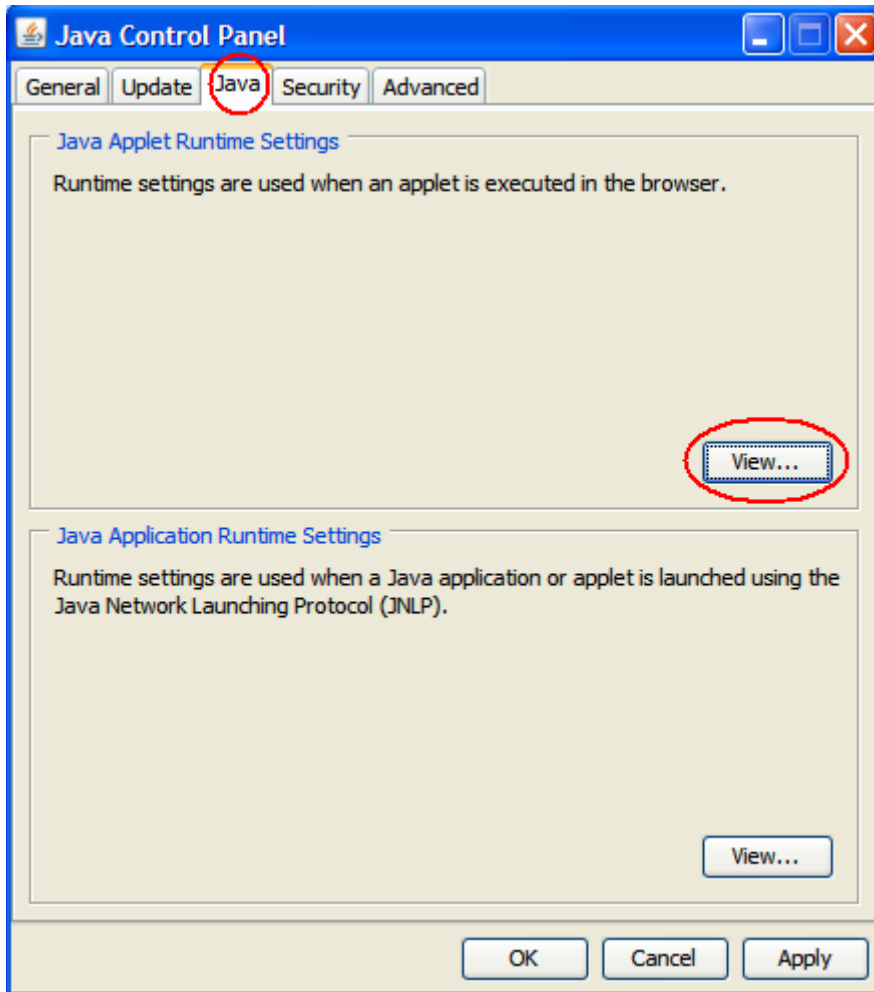
- Double Click the Java icon to open the 'Java Control Panel' window below and click the 'Update' tab and 'uncheck the 'Check for Updates Automatically'.



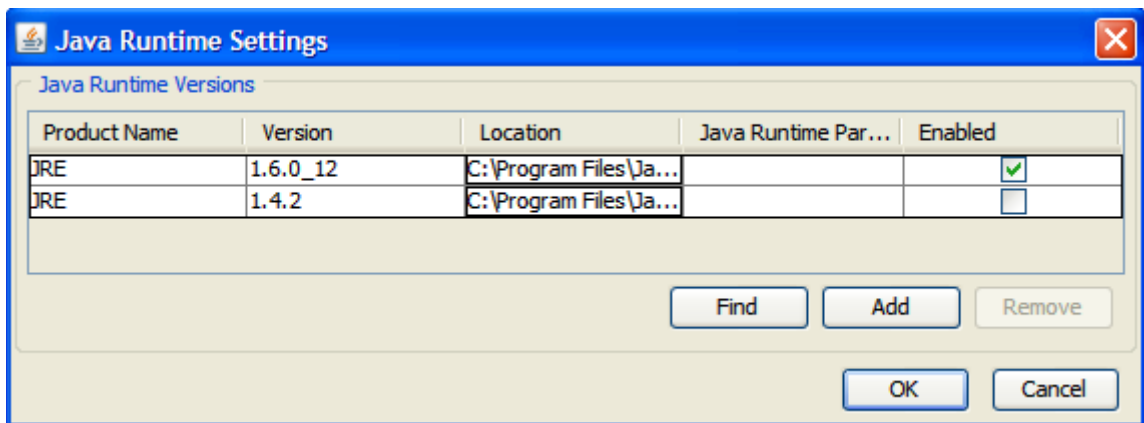
- Now you will see a 'Java Update – Warning' window and click 'Never Check' button to disable the auto update.



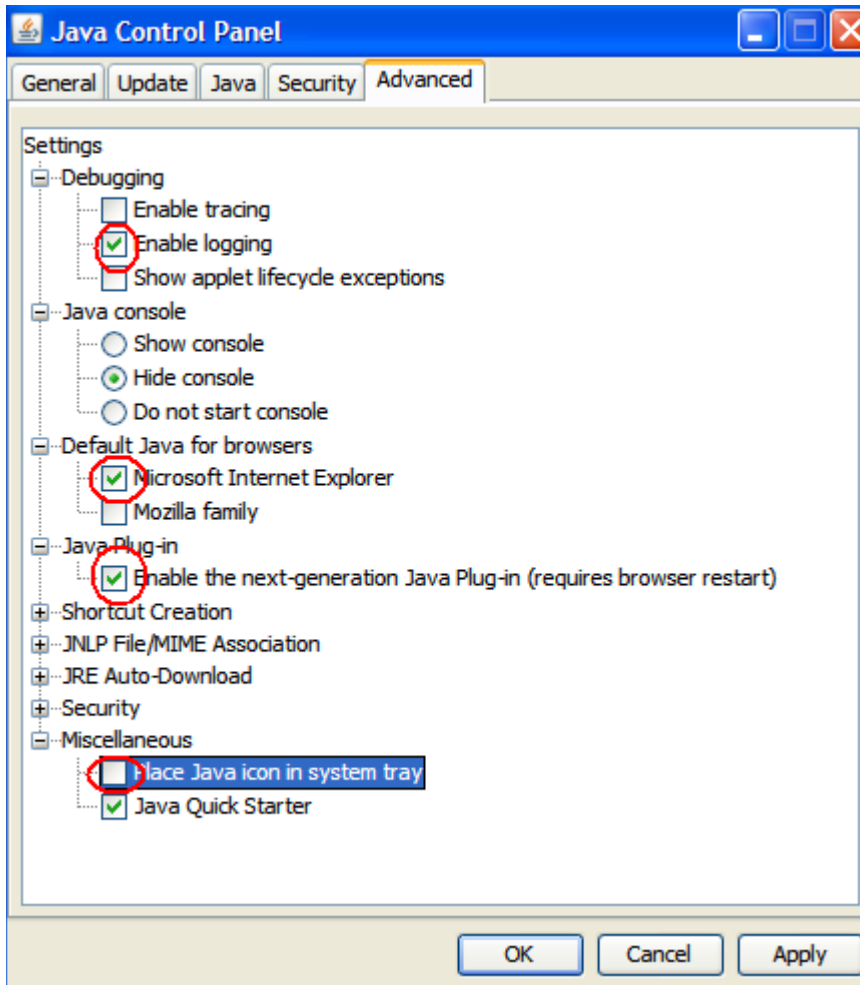
- Click on the 'Java' tab and select 'View...' button.



- A 'Java Runtime Versions' window will appear, **uncheck** to disable all the other versions of JRE plugins except the version 1.6.0_12 and click OK.



- Finally, Click on the Advanced Tab and check/uncheck the settings pointed out in the screen shot below.



- Click 'Apply' and OK to exit the 'Java Control Panel' window.

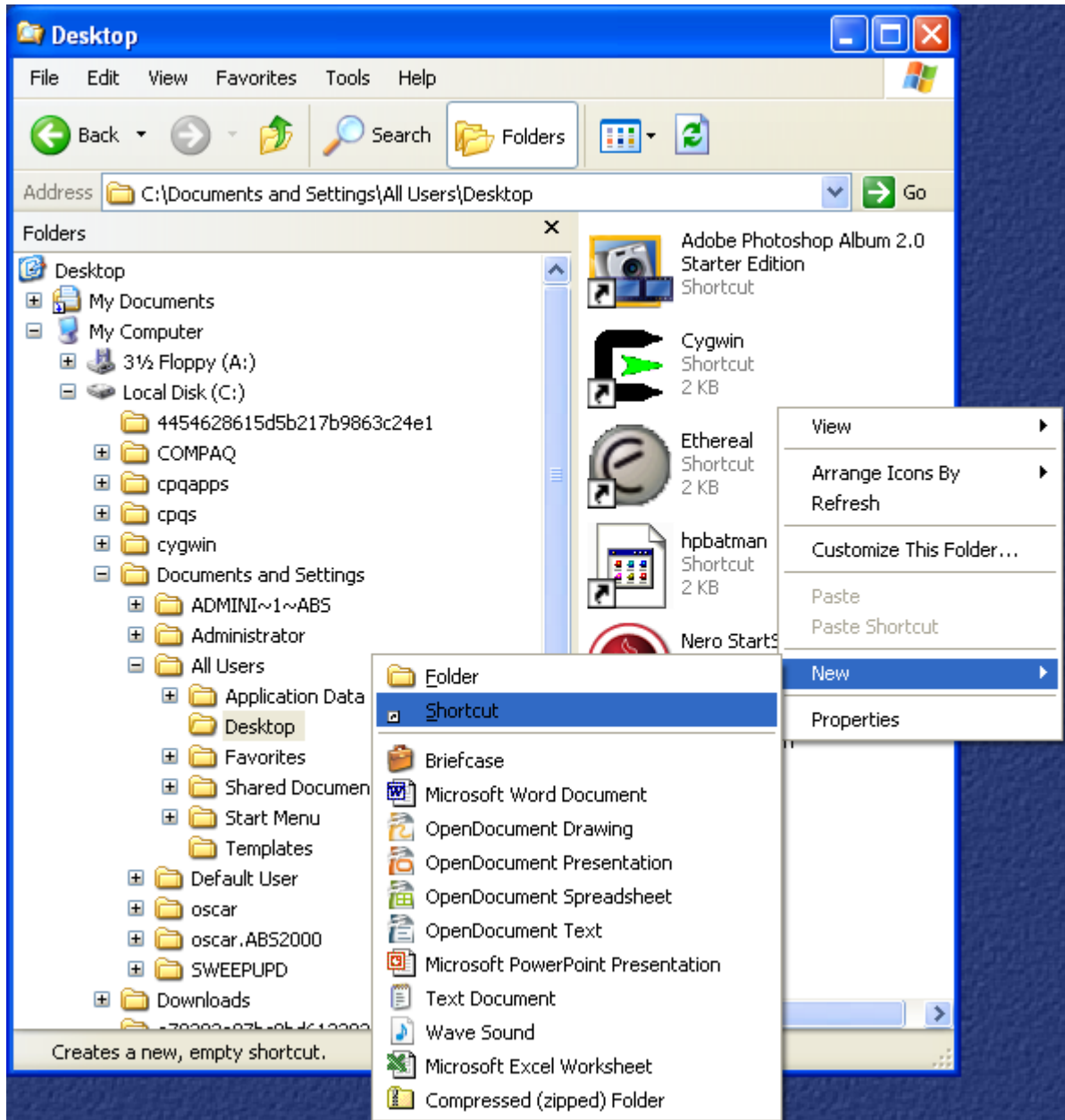
Now you have completed the JAVA plugin JRE 1.6.0_12 installation and you will only need to create a shortcut in the desktop to access the ABS2020 Release4 Application.

The instructions below will create a shortcut available to all users connecting in that particular PC.

Open up a *My Computer* window from the start button and browse to C:\Documents and Settings\All Users\Desktop.



Right click on the right hand area of the window and select **New** and the **Shortcut** options as shown in the following picture.



In the *Create Shortcut* window that appears, type or copy/paste one of the following URLs (Uniform Resource Locator):

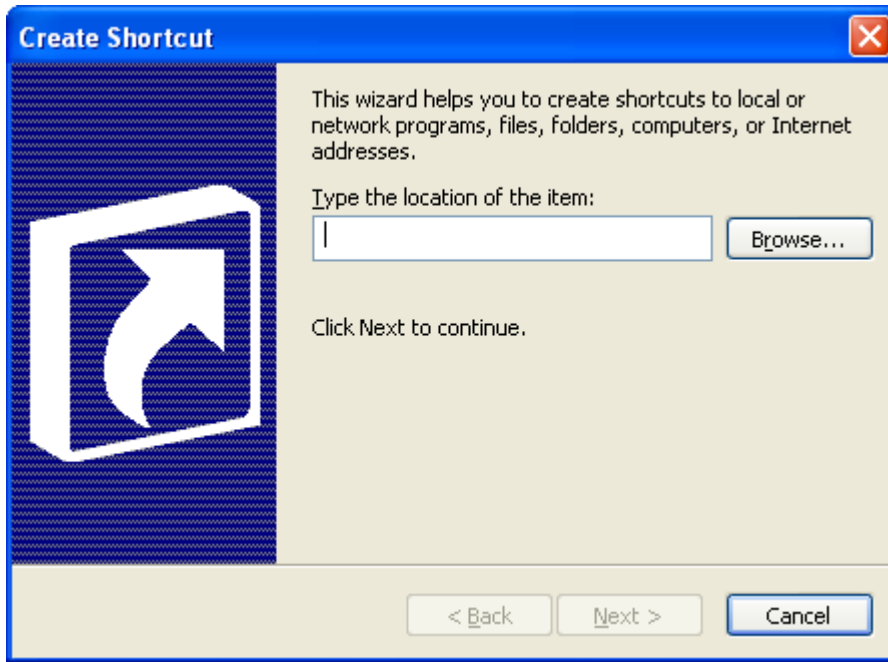
<http://192.168.100.20:7778/forms/frmservlet?config=ncts> if you use NCTS or

<http://192.168.100.20:7778/forms/frmservlet?config=absprod> if you use ABS2020

At this point, if you wish, you can also create the shortcuts for what will be the new production server, but if you do not want to put many similar shortcuts on the desktop's PC, just leave it for the moment when ABS2020 v4 will be deployed in the production server. These will be the URLs:

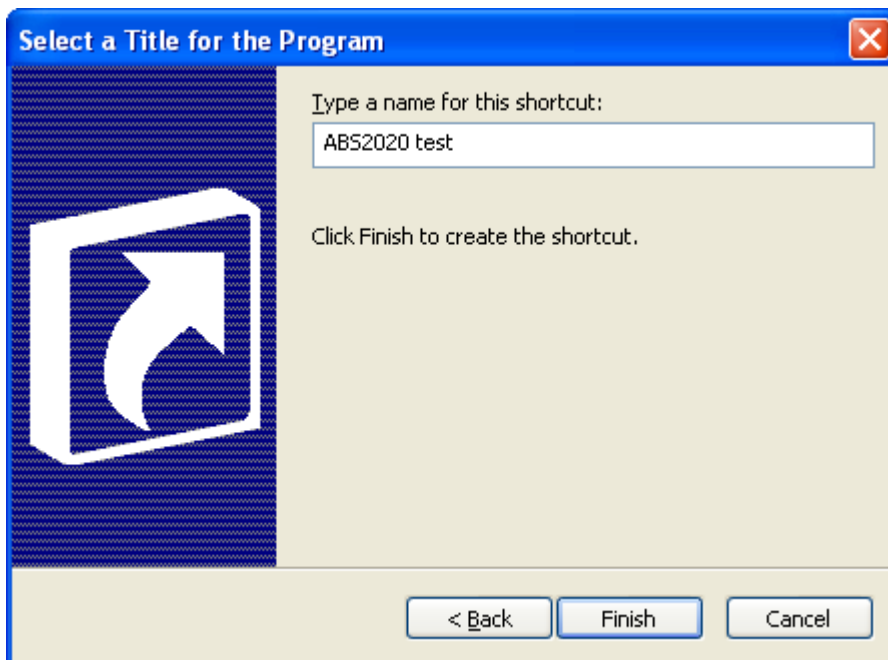
<http://192.168.100.18:7778/forms/frmservlet?config=ncts> for NCTS v4 and

<http://192.168.100.18:7778/forms/frmservlet?config=absprod> for ABS2020 v4



Then click **Next**.

Give a meaningful name to the ABS2020 or NCTS shortcut by typing it in the dialog box:



Then click **Finish**.

If you want to use different icons from the default windows shortcut, you can download the following ones from these URLs:

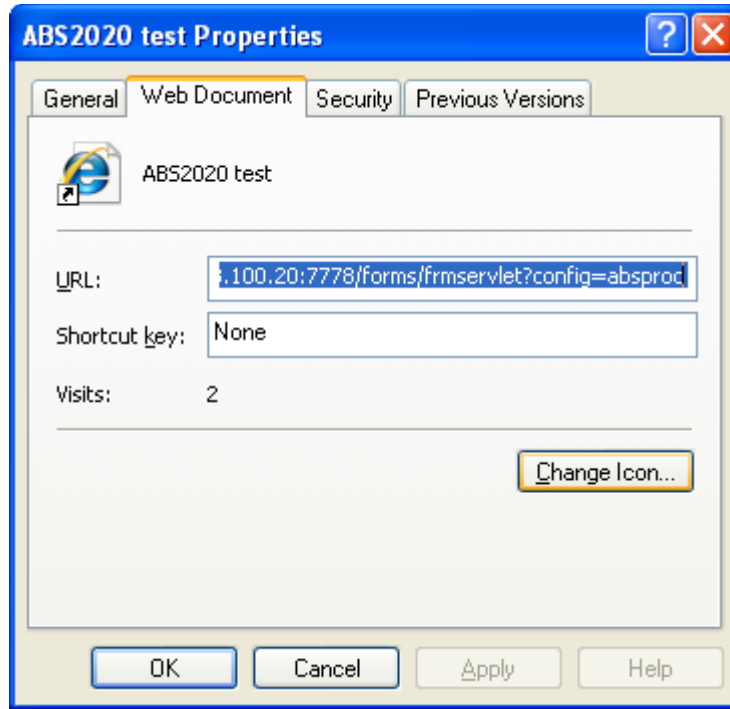
<http://www.abs2000.co.uk/download/ABS2000i2.ico>

<http://www.abs2000.co.uk/download/absncts14.ico>

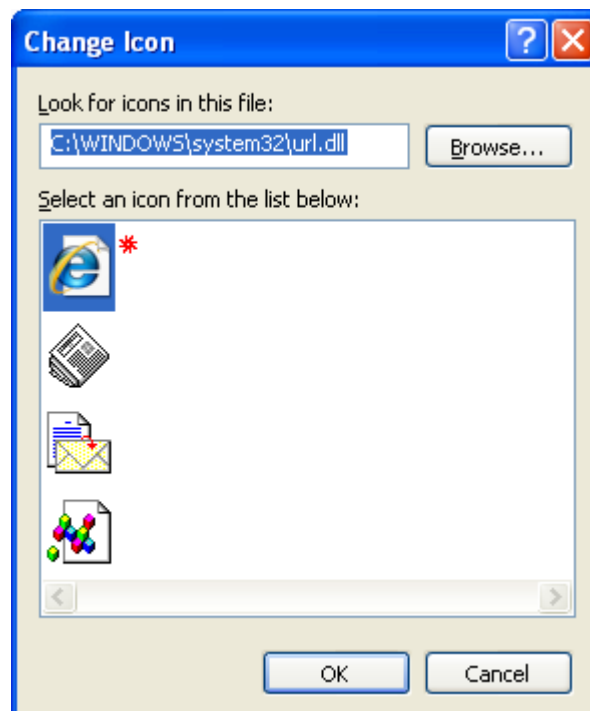
Save them in a shared directory that all users can access, like C:\Documents and Settings\All Users\Documents\My Pictures.

Highlight the new shortcut icon that was created previously, right mouse click the icon and select *Properties*

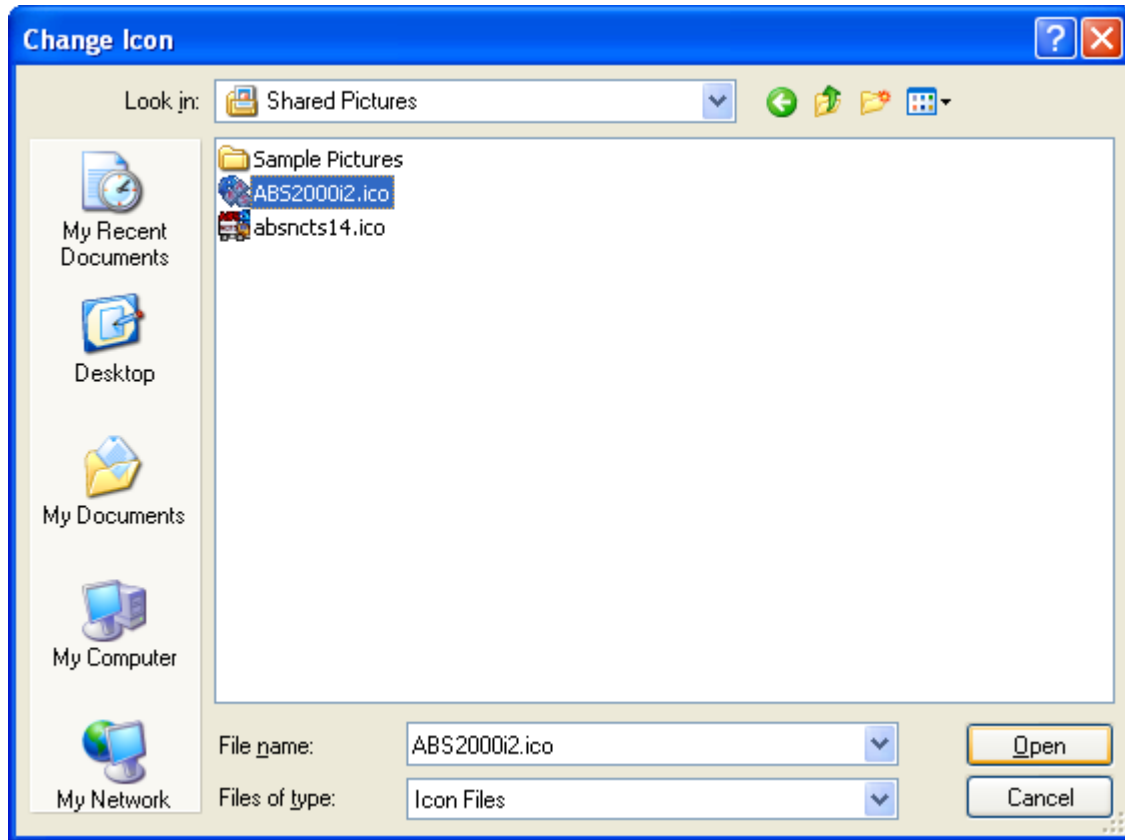
Click on the **Change Icon** button



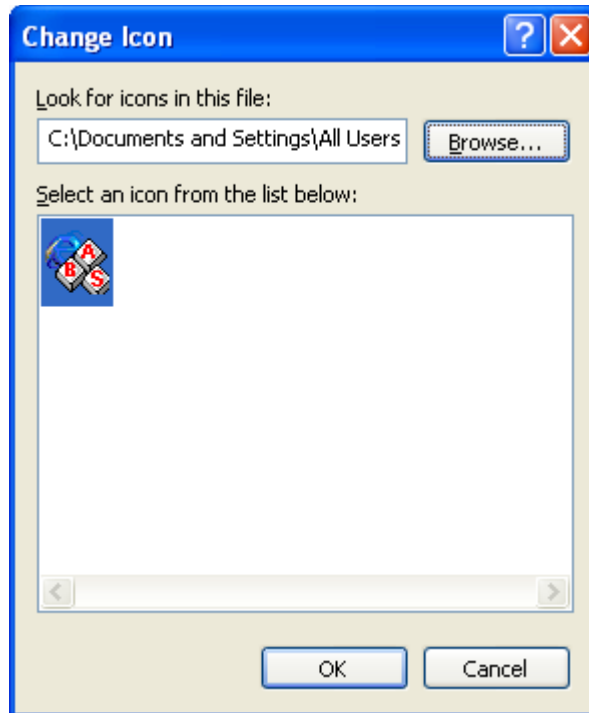
Click on the **Browse** button and browse to the directory were you saved the icons (C:\Documents and Settings\All Users\Documents\My Pictures if you followed the suggestion).



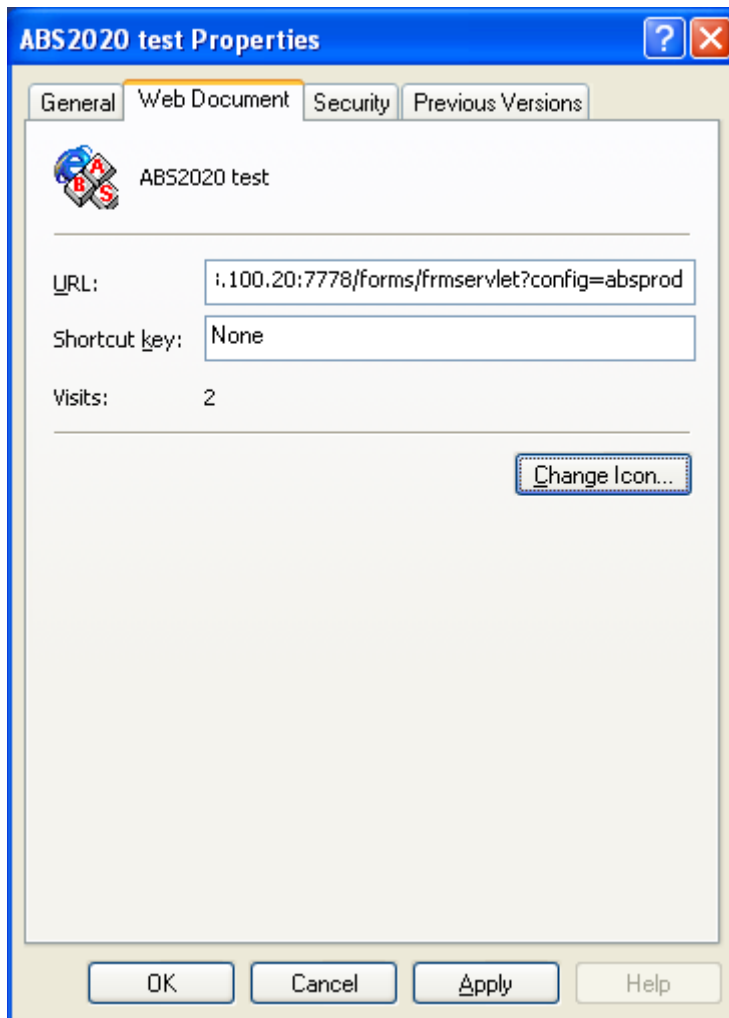
Select the appropriate icon and click on the **Open** button.



Click on the **OK** button.



Click on the **OK** button to save the changes to the Shortcut.



Using the shortcut created before, users can now connect to the test environment with your existing username and password or using the following credentials:

For ABS2020 username: abstest password:abstest

For NCTS username: nctstest password: nctstest1